



THE GREAT
SEWING
adventure
ACROSS ILLINOIS

ON THE ROAD

55" x 62"



MATERIALS:

[1] AILSH Panel

[4] AILSH Collectible Quilt Blocks

3/4 yards Stamp Toss fabric

1 yard Dots, Blue fabric for borders and binding

1/4 yard Dots, Cream fabric for border

1/2 yard each of Word Toss – Pink, Purple and Cream fabrics

2-1/4 yards Streets Border Stripe fabric

3-3/4 yards backing

READ THROUGH ALL INSTRUCTIONS BEFORE BEGINNING. PRESHRINK AND PRESS FABRICS. SEW PIECES RIGHT SIDES TOGETHER (RST) AND USE A 1/4" SEAM ALLOWANCE THROUGHOUT. WOF = WIDTH OF FABRIC, LOF = LENGTH OF FABRIC

CUTTING INSTRUCTIONS:

From AILSH Panel:

Trim the panel to 18" × 26"

Trim the [4] squares at the bottom of the panel to 5" square.

From AILSH Collectible Quilt Blocks

Trim [4] blocks to 5" square

Note: If they are a little smaller, it will be okay as you will trim the larger square later in the pattern.

From Stamp Toss Fabric:

Cut [12] – 2" × WOF strips

Subcut [3] strips into [18] 2" × 7" rectangles

Piece and cut the remaining strips into:

Subcut [2] – 2" × 47" strips

Subcut [2] – 2" × 42" strips

Subcut [2] – 2" × 39" strips

Subcut [2] – 2" × 31" strips

From Dots, Blue Fabric:

Cut [4] – 1-3/4" × WOF strips

Subcut [2] – 1-3/4" × 23" strips

Subcut [2] – 1-3/4" × 28-1/2" strips

Cut [5] – 1-1/2" × WOF strips, piece and then

Subcut [2] – 1-1/2" × 50" strips

Subcut [2] – 1-1/2" × 44" strips

Cut [7] – 2-1/4" × WOF strips for binding

From Dots, Cream Fabric:

Cut [3] – 1-3/4" × WOF strips

Subcut [2] – 1-3/4" × 26" strips

Subcut [2] – 1-3/4" × 20-1/2" strips

From each of the Word Toss, Pink, Purple and Cream Fabric:

Cut [2] – 7-1/2" × WOF strips

Subcut [12] 7-1/2" × 5" rectangles,

Then cut [6] diagonally from bottom left to top right corner and [6] diagonally from bottom right to top left corner



From Streets Border Strip Fabric:

Cut [4] – 6-1/4" × LOF strips, centering the motif design.

Subcut [2] – 6-1/4" × 66" strips

Subcut [2] – 6-1/4" × 59" strips

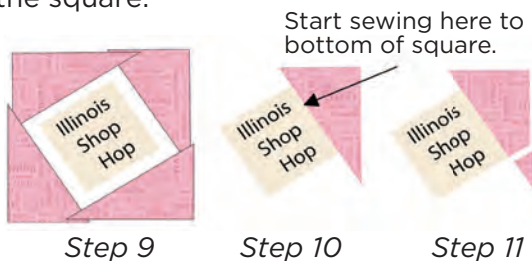
From the remainder of the strips, center and cut [10] – 5" squares

BLOCK ASSEMBLY:

1. Sew the 1-3/4" × 26" strips of Dots, Cream fabric to the sides of the AILSH panel.
2. Press towards the Dots, Cream fabric.
3. Sew the 1-3/4" × 20-1/2" strips of Dots, Cream fabric to the top and bottom of the panel.
4. Press towards the Dots, Cream fabric.
5. Sew the 1-3/4" × 28-1/2" strips of Dots, Blue fabric to the sides of the quilt top.
6. Press towards the Dots, Blue fabric.
7. Add the 1-3/4" × 23" strips of Dots, Blue fabric to the top and bottom. The quilt top should measure 23" x 31".
8. Sew the 2" × 31" strips of Stamp Toss fabric to the sides of the quilt top.



9. Gather [1] shop square and [4] left top to right bottom triangles of Word Toss, Pink fabric. Lay out the square with the triangles as shown.
10. Pick up the square and [1] triangle. Leave an overhang of 1" from the large edge of the triangle, start about 2" down and sew the triangle to the square.
- Note:** You will have about 2" unsewn.
11. Press towards the triangle. Trim the excess of the small end of the triangle even with the square.



12. Take a second triangle and sew down the entire end. Press towards the triangle. Trim the excess of the small end of the triangle even with the square.
13. Continue by adding the two remaining triangles. Sew the 2" that you had left unsewn. Press again towards the triangle.



14. Square the block to 7".
15. Repeat to make a total of [3] each of the left angled squares made with the Word Toss, Pink, Purple and Cream fabrics. Refer to quilt diagram for placement of blocks and colors of triangles.



16. Repeat the same procedure but this time use the right top to left bottom triangles and make [3] each of Word Toss Pink, Purple and Cream fabric right angled squares. Refer to quilt assembly for placement of blocks and colors of triangles.
17. Noting the placement of the left and right angled squares, place and sew the squares and 2" x 7" rectangles of stamp fabric together as shown.
18. Press towards the stamp fabric.
19. Add the 2" x 39" of stamp fabric to the bottom of the resulting strip to make the top row.



20. Repeat for the bottom row but this time add the 2" x 39" strip of Stamp Toss fabric to the top.
21. Press towards the Stamp Toss fabric.



22. Again noting the placement of the left and right angled square, place and sew the squares and 2" x 7" rectangles to make the left and right columns.
23. Sew the left and right columns to the quilt top.
24. Press towards the columns.
25. Sew the top and bottom rows to the corresponding top and bottom.
26. Press towards the rows.



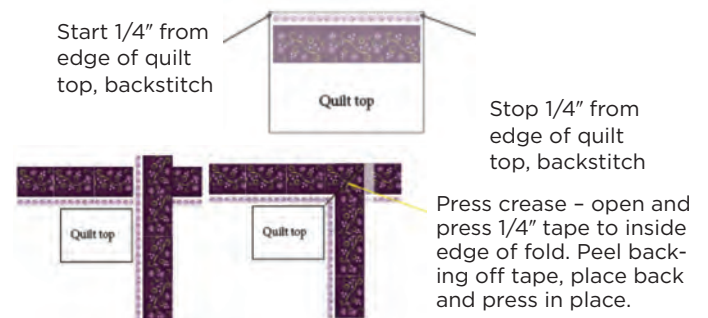
BORDER ASSEMBLY:

1. Sew on the 2" × 47" strips of Stamp Toss fabric to the sides of the quilt top.
2. Press towards the Stamp Toss fabric.
3. Sew the 2" × 42" strips of stamp fabric to the top and bottom.
4. Press towards the Stamp Toss fabric.
5. Sew on the 1-1/2" × 50" strips of Dots, Blue fabric to the sides of the quilt top.
6. Press towards the Dots, blue fabric.
7. Sew on the 1-1/2" × 44" strips of Dots, Blue fabric to the top and bottom.
8. Press towards the Dots, Blue fabric.
9. Sew on the border stripes, per mitered instructions.

Mitered Corners

1. To add the mitered border, fold a border strip in half.
2. Fold the quilt in half along the length.
3. Pin at the folds at the half mark of the border and the quilt.
4. Starting from one end, and in a 1/4", sew to the other end, again stopping at 1/4". Backstitch at the beginning and the end.
5. Repeat this procedure for the remaining borders.

6. Lay the quilt top on your ironing board working on one corner at a time. Place one border strip flat out. Take the second border strip and fold it with wrong sides together at a 45° angle.



7. Press the fabric to create a crease at the angle. Pull down the creased border with wrong sides out and following manufacturer's directions, fuse a 1/4" tape along the crease.
8. Remove paper, replace back on the other border strip and fuse.
9. Sew along the crease, backstitching at the beginning and end.
10. Trim the excess border strips to 1/4". Repeat for remaining corners.

FINISHING:

1. Layer quilt top with batting and backing.
2. Quilt as desired.
3. Bind.
4. Label and Enjoy!



MONIQUE JACOBS

Monique Jacobs of Loves Park, IL (USA), was born in Winnipeg, Manitoba (Canada). Her love of quilting was encouraged by relatives in Canada who taught her the art of handwork and sewing. She parlayed her degree in mathematics into a genuine understanding of the need for an accurate 1/4" seam, squared blocks and precise cutting. She was a regular teacher at her local quilt shop for 15 years until her budding quilt design business - Open Gate - steered her career toward a national audience. These days, you can find Monique teaching across the United States at quilt guilds and weekend retreats. Monique's classes always fill up fast with fans from previous classes and students eager to learn from this talented designer.

Monique has over 200 (and counting) Open Gate patterns and 5 rulers (Fit to be Geese©, Mini Fit to be Geese©, and Fit to be Quarter©. Fit to be Quarter 2.5©, Fit to be Quarter 6.5 & Companion©) She has written 3 books with C&T Publishing, Fat Quarter Winners, Traditional Fat Quarter Quilts, and Diamond Traditions. All 3 books feature traditional, Americana inspired fat quarter quilts. She finds inspiration for her traditional designs everywhere and is inspired by fabrics, textiles and tapestries. Several trips to Europe have resulted in not only new beautiful quilt pattern designs, but also her fabric collections with Maywood Studio.