

THE GREAT  
SEWING  
*adventure*  
ACROSS ILLINOIS



# The Lincoln Special Quilt

64" x 84"

Designed & Pieced by  
**Jana Wrigley**  
Stewart's Sewing Machines

Quilted by  
**Becky Morris**  
BB's Quilting





## MATERIALS:

3-3/4 yards Blender Parchment  
3/4 yard Garnet Quilt Block  
1-1/3 yards Denim Quilt Block  
2/3 yard Green Quilt Block  
2-3/4 yards Border Stripe  
3/4 yard Garnet Quilt Block, Binding  
5 yards fabric of your choice for Backing

*READ THROUGH ALL INSTRUCTIONS BEFORE BEGINNING. SEW PIECES RIGHT SIDES TOGETHER (RST) AND USE A 1/4" SEAM ALLOWANCE THROUGHOUT. WOF = WIDTH OF FABRIC; WS = WRONG SIDE OF FABRIC; RS = RIGHT SIDE OF FABRIC; HST = HALF SQUARE TRIANGLE. I LIKE TO SPRAY STARCH MY FABRIC BEFORE I CUT.*

## CUTTING INSTRUCTIONS:

### From Denim Quilt Block Fabric:

Cut [12] — 2-5/8" × WOF strips

Cut [2] — 2-5/8" × WOF strips

Subcut [21] — 2-5/8" squares

### From Blender Parchment Fabric:

Cut [12] — 2-5/8" × WOF strips

Cut [6] — 4-3/4" × WOF strips

Subcut [84] — 4-3/4" × 2-5/8" rectangles

Cut [5] — 4-3/8" × WOF strips

Subcut [42] — 4-3/8" squares

Cut [9] — 4" × WOF strips

Subcut [84] — 4" squares

### From Quilt Block Green Fabric:

Cut [3] — 4-3/8" × WOF strips

Subcut [20] — 4-3/8" squares

Cut [1] — 4" × WOF strip

Subcut [10] — 4" squares

### From Quilt Block Garnet Fabric:

Cut [3] — 4-3/8" × WOF strips

Subcut [22] — 4-3/8" squares

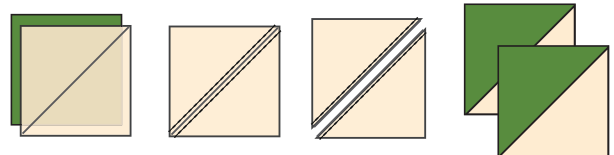
Cut [2] — 4" × WOF strips

Subcut [11] — 4" squares

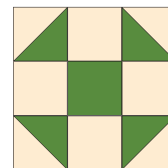
## INSTRUCTIONS:

### SHOO FLY BLOCKS

1. Take [1] Quilt Block Green 4-3/8" square and a Blender Parchment 4-3/8" square and place them RST.
2. Draw a line diagonally across block then sew 1/4" away from the line on both sides.
3. Cut apart on diagonal line. Press. Block should measure 4". Make [40] Quilt Block Green HST.

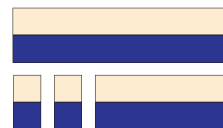


4. Repeat with the Quilt Block Garnet 4-3/8" squares and Blender Parchment 4-3/8" squares to make [44] HST. Trim to 4".
5. Following layout, use [4] HST, [4] Blender Parchment 4" squares and [1] — 4" square to match HSTs. Layout as shown. Sew together. Press. Block should measure 11". You will have [10] Quilt Block Green blocks and [11] Quilt Block Garnet blocks.

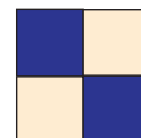


### CHAIN BLOCK:

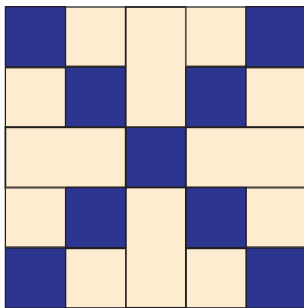
1. Each block consists of [4] 4-patch blocks. Let's make these the easy way! Using the Quilt Block Denim 2-5/8" strips and Blender Parchment 2-5/8" strips, RST, sew along the length. Press seams open. Make [12] sets.
2. Subcut these strip sets into 2-5/8" segments. These will make the 4-patch.



3. Taking [2] of the 2-5/8" segments, piece together as shown, make a 4-patch block. Make [84] of the 4-patch units. We will call these blocks **(A)**. Press and set aside.

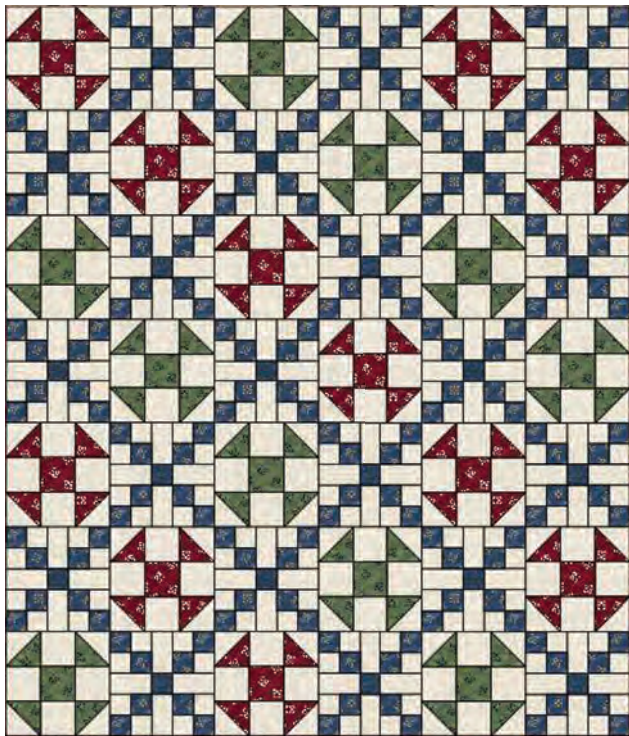


- Following the diagram below, take [1] 4-patch and [1] Blender Parchment  $4\frac{3}{4}" \times 2\frac{5}{8}"$  rectangle and sew together.
- Add another 4-patch to the other side of the Blender Parchment rectangle. Press. Repeat to make another identical piece.
- Take [1] Blender Parchment  $4\frac{3}{4}" \times 2\frac{5}{8}"$  rectangle and [1] of the Quilt Block Denim  $2\frac{5}{8}"$  squares and sew together on the short end.
- Add another Blender Parchment rectangle to the opposite side of Quilt Block Denim square. Press. This is the center unit.
- Place [1] 4-patch unit and the center unit together, matching seams, and stitch. Add the other 4-patch unit to the bottom. Make a total of [21] blocks. Trim blocks to 11".



## QUILT TOP INSTRUCTION:

- Following the layout below, piece blocks together as shown, pressing as you go.



## BORDERS:

For help with mitering corners, check out video on Facebook: Stewarts Sewing Machines, Inc.

- Take the border fabric and lay out single layer. Using scissors, find a line (area) to cut. I used the edge of the "Illinois" border and the top of the train. Make sure you can get four of the same cuts. You will use [2] Red trains and [2] Blue Trains. (A)
- Once the [4] long LOF strips are cut, find the center of the strip and mark. (B) Now, find the center of one side of your quilt and mark. These strips will be longer than you need. Placing the center marks together and fabric RST, pin border onto the quilt edge. It doesn't matter which side you start on. (C1) Mark  $\frac{1}{4}"$  away from each edge of the quilt corners. I found that the Sew Standard Seam Guide by It's Sew Emma worked great!
- Using the  $\frac{1}{4}"$  foot, sew the border on, starting  $\frac{1}{4}"$  away from the corner (D1, D2, D3) and stopping  $\frac{1}{4}"$  away from the other corner. Repeat for the remaining [3] sides.



- Once all [4] sides are sewn on, (cue Video) Grab a marking pen, straight pins and a ruler with a 45 degree angle on it. Fold quilt over, so that the borders closest to each other are laying RST. (E) Make sure both the edges are even. Pin across the top to hold. (F1)
- Taking your ruler, lay the  $45^\circ$  line at the bottom edge. Line up the edge of ruler where the  $\frac{1}{4}"$  stitching ends. Mark the line. (F2) Pin at the line and baste on the line. (F3) Open and check to make sure you have a good miter.
- When happy with the results, stitch with a regular seam length. Trim off excess fabric about  $\frac{1}{2}"$  away from stitching line. Repeat on the remaining [3] sides.





## APPLIQUE:

1. Use the included pattern and trace onto Heat n Bond lite, or your favorite fusible webbing.
2. Taking the black Fat Quarter, place the design onto the fabric, rough side down. Press the fusible onto the fabric. Let cool.
3. Cut out the design on the line. Now choose where you would like the Lincoln silhouette to be on your quilt! Using a Zig Zag or a decorative stitch, sew around the edges of the design. TaDa! A quilt top is completed.

## FINISHING:

1. Layer backing, batting and top, quilt as desired.
2. Bind. Attach to quilt by hand or machine as preferred.
3. Label and Enjoy!

## Jana M. Wrigley



I have been around sewing my entire life! My dad opened his sewing shop in 1964 with 1 used sewing machine, a cabinet and a lot of elbow grease. I started working in the summer of 1981 right out of High School. We expanded in 1997, opened a quilt shop, and I have been at it ever since! We serve East Central Illinois with beautiful fabrics, sewing machines from Janome, BabyLock and Juki, and lots of classes. I love the creativity that sewing and quilting bring! My husband and I have 2 children and 3 grandchildren who have lit our world up with joy!